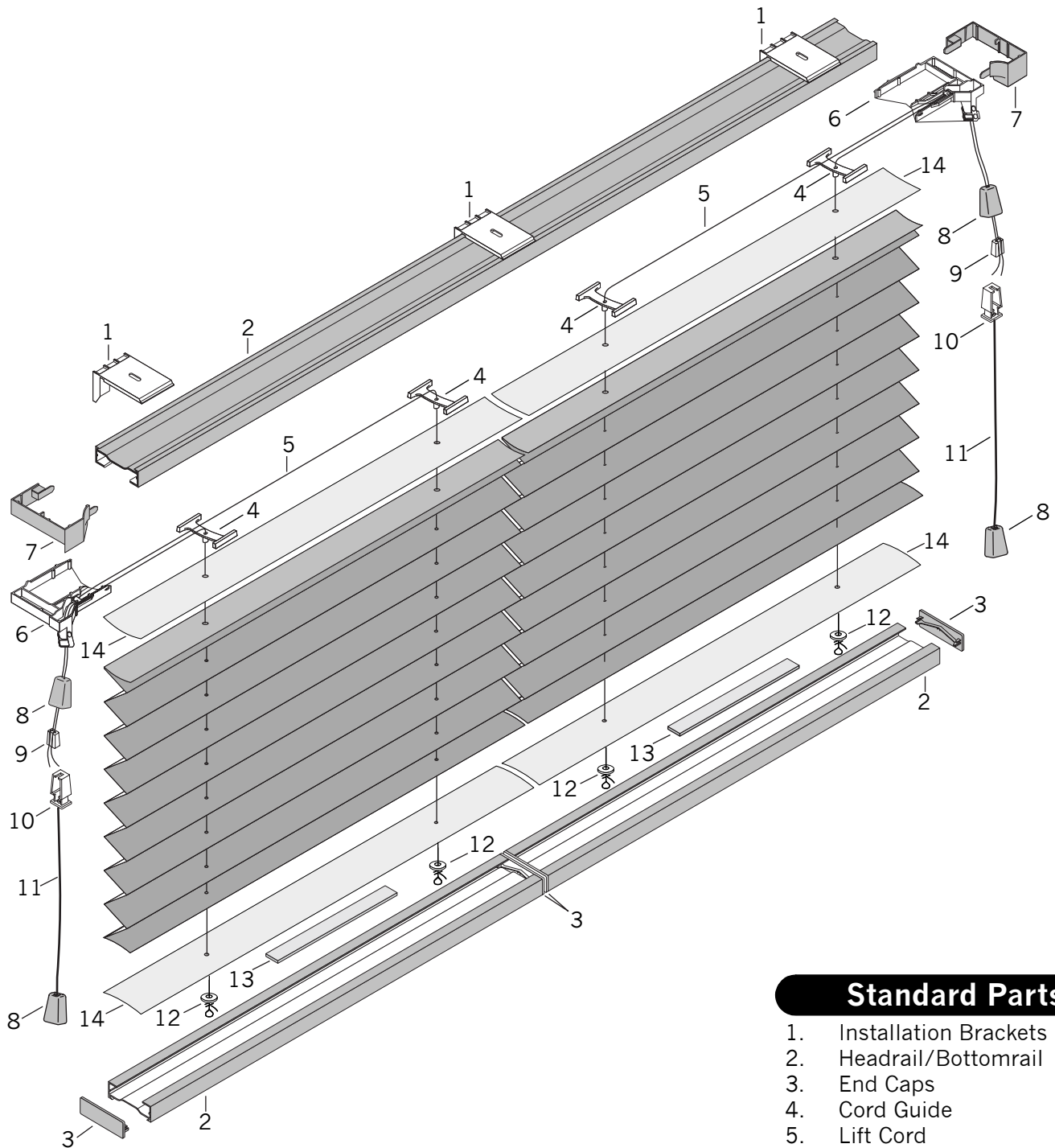


Two-On-One Shades



Standard Parts

1. Installation Brackets
2. Headrail/Bottomrail
3. End Caps
4. Cord Guide
5. Lift Cord
6. Cordlock Body
7. Cordlock Cover
8. Universal Cover/Tassel
9. Cord Equalizer
10. Equalizer Housing
11. Pull Cord
12. Plastic Washer
13. Rail Weight* – Optional
14. Filler Strip

Two-On-One Shades

No.	PCN	Description	Additional Components:
1.		Installation Brackets	XSB101A72P Room Darkening Backing
	PC555255	White (2 Pack)	XTW101A60P Light Filtering Backing
	PC555256	White (3 Pack)	2980246000 Child Safety Kit
	2980038000	3/8" End Mount Clip	444956 Extension Bracket
2.	2950010xxx	Headrail/Bottomrail	5007311000 Hold-Down Bracket
3.		Headrail/Bottomrail Endcaps	555004 Installation Screw
	5570xx		2930230000 Spacer Block
	2950020xxx		555065 Double Faced Tape
4.	558000	Cord Guide	888083A Installation Instructions (English)
5.		0.9 mm Lift Cord	LIT888083AF Installation Instructions (French)
	5580xx		
	PC5580xx		
6.		Cordlock Body	888105 Bottomrail Label (English)
	2950095000	Left Hand	7106858000 Bottomrail Label (French)
	2950094000	Right Hand	7107684000 Cord Stop Safety Hang Tag
7.		Cordlock Cover – Left Hand	
	5560xx		
	2950085xxx		xxx = Color Code
		Cordlock Cover – Right Hand	
	5560xx		
	2950075xxx		
8.	2930440xxx	Universal Cover/Tassel	
9.	559058	Cord Equalizer	
10.	2930561000	Equalizer Housing	
11.		1.8 mm Pull Cord	
	5580xx		
	PC5580xx		
	WWC5580xx		
12.	555019	Plastic Washer	
13.		Rail Weight - Optional (*used only if needed)	
	PC5550003		
	PC5550006		
	PC55500012		
14.	2954000000	Filler Strip	