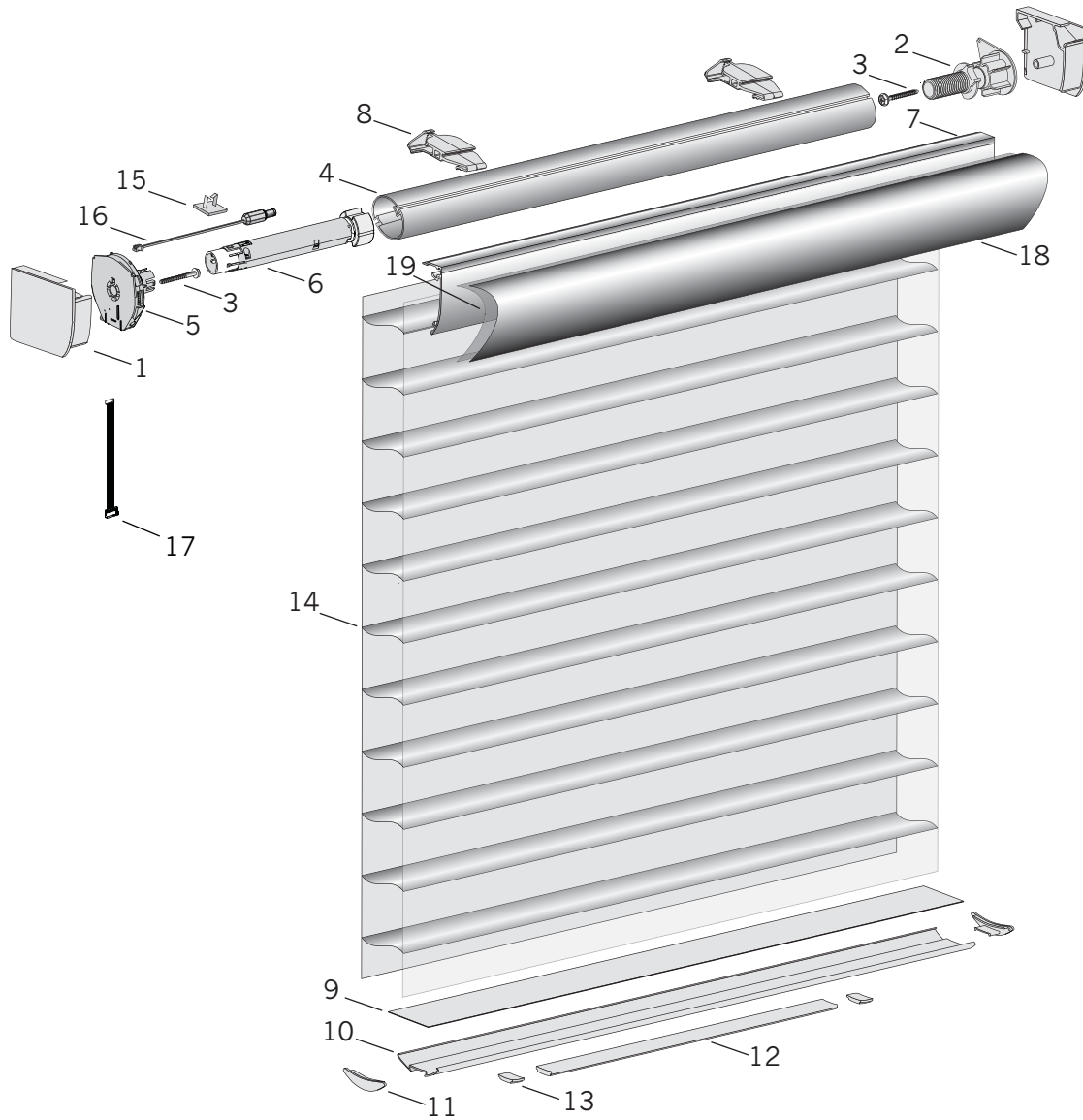


# Silhouette® and Nantucket® Shadings



## Standard Parts

- |                             |                          |                                  |
|-----------------------------|--------------------------|----------------------------------|
| 1. Headrail End Caps        | 8. SU Std. Top Limit     | 15. Wire Saddle                  |
| 2. URR Limit Screw Assembly | 9. Bottom Slat           | 16. Power Adapter Cable          |
| 3. Screw                    | 10. Bottom Rail          | 17. Interface Module Cable Assy. |
| 4. Universal Rotator Rail   | 11. Bottom Rail End Caps | 18. FCH Fabrid                   |
| 5. SU Cartridge Assembly    | 12. Balance Weight       | 19. Full Width Tape              |
| 6. URR Motor Assembly       | 13. Weight Clips         |                                  |
| 7. Fabric Covered Headrail  | 14. Fabric               |                                  |

# Silhouette® and Nantucket® Shadings

<b>No.</b>	<b>PCN</b>	<b>Description</b>
1.		Headrail End Caps
	4178201xxx	Oversized (Not Shown)
	4158226xxx	Standard
2.		URR Limit Screw Assembly, PowerRise®
	4158219000	LH
	4158218000	RH
3.	4150158000	Screw #10 x 5/8" Sheet Metal Washer Head Screw Zinc-Plated
4.	4150260xxx	Universal Rotator Rail (785 - For all fabrics except A20, A27, & N27)
5.		SU Cartridge Asm, STD, Platinum™ 2.0
	4151068004	RH
	4151070004	LH
6.	4150242000	URR Motor Assembly
7.		Fabric Covered Headrail
	4158256661	Standard (Select Fabric Color for Silhouette)
	4170314661	Oversized (Not Shown) (Select Fabric Color for Silhouette) Nantucket FCH is optional
8.	4150057885	SU Std. Top Limit
9.	N/A	Bottom Slat
10.	4150128xxx	Bottom Rail
11.	4150084xxx	Bottom Rail End Caps
12.	4150082xxx	Balance Weight (Bottom Rail Weight)
13.	4150083xxx	Weight Clips
14.	N/A	Fabric
15.	2981136000	Wire Saddle
16.	2920247000	Power Adapter Cable
17.	4151186000	Interface Module Cable Assy (Only used if Connection Interface, PCN 4254220003, is ordered.)
18.	N/A	FCH Fabric
19.		Full Width Tape
	4150153500	SU FW Tape, 3.219" X 320 Yards
	4150155500	NAN FW Tape, 3.219" X 60 Yards

xxx = 3-digit color code