



kirsch®

Custom Natural Shades

Suggested Retail Pricing  
Effective February 2016

## Table of Contents

### Overview

How to Place an Order	3
How to Measure	4
Critical Dimensions	5–6
Finish Index	6–7
Light Control Index	8
Cleaning Guide	8

### Pricing

Price Group A—Loggia	9
Price Group B—Bambu Palos, Gull Harbor	10
Price Group C—Caribbean Blend, Heirloom Stripes	11
Price Group D—Metropolitan, Sunset Key, Serape	12
Price Group E—Palisades, Woven Sisal, Tranquil Cove	13
Price Group F—Seaside	14
Pricing for Upgrades	15

### Product Guide

Options	16–20
Decorative Options	
Valance Options	
Light Control	
Lift Options	
Special Brackets	
Mitered Shades and Specialty Shapes	
How To Make a Template	21
Exploded View—Standard Natural Shade	22
Exploded View—Cordless Natural Shade	23
Exploded View—Continuous Cordloop Natural Shade	24
Troubleshooting Tips	25
Terms and Conditions	26

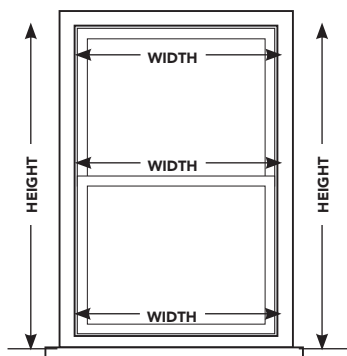
## How to Place an Order

**Step 1** Choose Your Shade Type

**Step 2** Choose Your Fabric and Color

**Step 3** Choose Your Options

## How to Measure



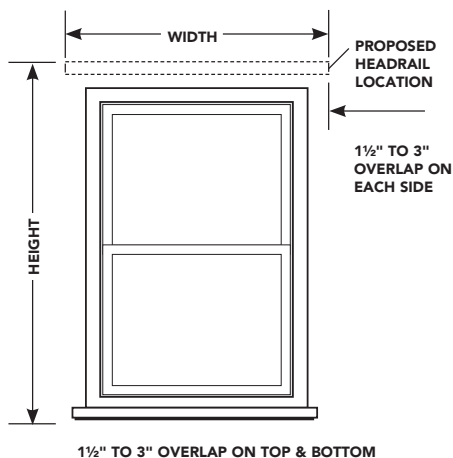
### INSIDE MOUNT (IM) INSTALLATION

#### TO FIND WIDTH

Measure exact distance between inside surfaces of window frame at the top, middle, and bottom, and use the narrowest width. **DO NOT MAKE ANY WIDTH DEDUCTIONS.** See page 5 for factory deductions.

#### TO FIND HEIGHT

Measure exact distance from inside surface at top of window to sill. If you prefer shade not to touch sill, deduct  $\frac{1}{4}$ ". If there is no sill, measure height to point where shade is to reach.



### OUTSIDE MOUNT (OM) INSTALLATION

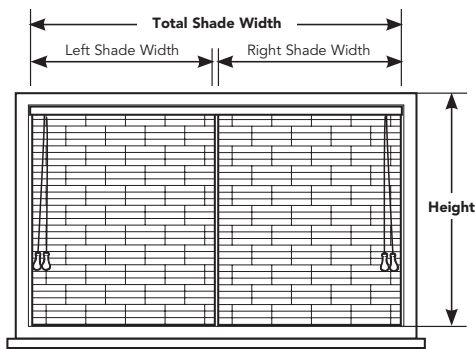
#### TO FIND WIDTH

Measure exact distance between the outermost points where the shade is to be placed. This measurement should overlap each side of window frame by at least  $1\frac{1}{2}$ ". See page 5 for factory deductions.

#### TO FIND HEIGHT

Measure exact distance from where top of shade will be located to top of sill. If there is no sill or if shade is to overlap window frame, measure to point shade is to reach.

## How to Measure Multiple Shades on One Headrail



#### NOTES:

- The left shade width plus the right shade width must equal the overall shade width.
- There will be a  $\frac{1}{2}$ " inner space between the fabric on the left and right shades to allow for shades to operate independently.
- Each shade operates separately.
- Available in all operating systems except Top Down/Bottom Up.
- Horizontal pattern alignment between shades is not guaranteed.
- Must include Classic or Wood Valance.
- A continuous valance up to 96" is available for Classic and Wood Valance; after 96" valance will be spliced.
- Lift control will be located on the outside of each shade.
- Not available with Angle Top, Cathedral or Cutout option.

### INSIDE MOUNT

- Overall Shade Width—Measure the window's width at the top, middle, and bottom. Order the narrowest measurement.
- Left Shade Width—Measure the width that you want the left shade to cover.
- Right Shade Width—Measure the width that you want the right shade to cover.
- Height—Measure the window from the top to the bottom for the desired height.
- Order the left shade first when placing the order.

**NOTE:** There will be a  $\frac{1}{2}$ " gap between the fabric on the left and right shade to allow for shades to operate independently.

### OUTSIDE MOUNT

- Overall Shade Width—Measure the desired width.
- NOTE:** For maximum privacy and window coverage, add an additional 3" to total width of window.
- Left Shade Width —Measure the width that you want the left shade to cover.
  - Right Shade Width—Measure the width that you want the right shade to cover.
  - Height—Measure the desired height.
- NOTE:** For maximum privacy and window coverage, add at least 3" to overall height of the window.
- Order the left shade first when placing the order.
- NOTE:** There will be a  $\frac{1}{2}$ " gap between the fabric on the left and right shade to allow for shades to operate independently.
- NOTE:** For standard shades, controls will be located on the left side of the left shade and the right side of the right shade.
- NOTE:** Fabrics cannot be seamed or overlapped.

## Critical Dimensions

	Standard Corded	Standard Corded TDBU	Cordless	Continuous Cordloop	Separate Shade Valance	Specialty & Mitered Shapes*
Headrail Dimensions	1 1/8" h x 1 7/16" d	1 1/8" h x 1 7/16" d	1 1/8" h x 1 7/16" d	1 1/8" h x 1 7/16" d	1 1/8" h x 1 7/16" d	1 1/8" h x 1 7/16" d
Headrail Deductions - Inside Mount	1/2"	1/2"	1/2"	1/2"	N/A	1/2"
Fabric Deductions - Inside Mount w/ 1" Edge Binding	5/8"	5/8"	5/8"	5/8"	N/A	5/8"
Fabric Deductions - Inside Mount w/ 2" Edge Binding	3/4"	3/4"	3/4"	3/4"	N/A	3/4"
Fabric Deductions - Inside Mount w/o Edge Binding	1/2"	1/2"	1/2"	1/2"	1/2"	1/2"
Headrail Deductions - Outside Mount	1/2"	1/2"	1/2"	1/2"	1/2"	1/2"
Fabric Deductions - Outside Mount w/ 1" Edge Binding	1/8"	1/8"	1/8"	1/8"	N/A	1/8"
Fabric Deductions - Outside Mount w/ 2" Edge Binding	1/4"	1/4"	1/4"	1/4"	N/A	1/4"
Fabric Deductions - Outside Mount w/o Edge Binding	0"	0"	0"	0"	0"	0"

### Minimum Installation Depth Required

Headrail protrudes from window	3/4"	3/4"	3/4"	3/4"	3/4"	3/4"
Headrail flush with window	2"	2"	2"	2"	2"	2"
Valance Standard Height	6"	6"	6"	6"	6"	6"
Minimum Valance Height	6"	6"	6"	6"	6"	6"
Maximum Valance Height	30"	30"	30"	30"	30"	30"

### Single Shade

Minimum Width	10"	16"	18"***	21"	6"	10"†
Maximum Width	96"	66"	72"	96"***	96"	96"†
Minimum Height	12"	12"	24"***	18"	6"	12"†
Maximum Height	120"	84"	72"	96"***	30"	96"†

### 2 on 1 Headrail

Minimum Width	21"	N/A	36 1/2"****	42"	N/A
Maximum Width	144"	N/A	144"	144"	N/A
Minimum Height	18"	N/A	24"****	18"	N/A
Maximum Height	120"	N/A	72"	96"††	N/A

\* Specialty Shapes = Arch & Angle Top

\*\* If Width is less than 22", Height must be greater than or equal to 36"

\*\*\* See Price Chart

\*\*\*\* If Width is less than 44 1/2", Height must be greater than or equal to 36"

† For Mitered Shades, width and height depend on operating system; maximum height of Angle Top shades is 120."

†† See page 18 for specific Minimum/Maximum Width/Height information.

WIDTH	up to 30"	37"	40"	41"	49"	50"	60"	63"	77"	96"	100"	122"	144"
Quantity of Cords - Corded Top Down/Bottom Up	2	2	2	3	3	3	4	5	N/A	N/A	N/A	N/A	N/A
Quantity of Cords - Cordless	2	2	4	4	4	4	4	4	6	6	VARIOUS	VARIOUS	VARIOUS
Quantity of Cords - Continuous Cordloop	2	3	3	3	3	4	4	5	5	5	VARIOUS	VARIOUS	VARIOUS
Quantity of Installation Brackets	2	2	2	2	2	3	3	3	3	3	4	4	5

**NOTE:** Standard Cord length is 2/3 length of the shade. Available in any custom width 0" -144"  
Custom cord length can not be ordered for Continuous Cordloop.

## Critical Dimensions

This chart represents the amount of shade that is gathered at the top of the window when fully raised. The measurements in this chart include the stack of the fabric, the headrail and the bottomrail.

### How to Use the Chart:

1. Find Lift Option
2. Look to right to find stack height for specific shade height

STACKING CHART	Height	36"	48"	60"	72"	84"	96"	108"	120"
		Corded, Cordless, Continuous Cordloop	8"	9"	10"	11"	12"	12½"	13½"
Corded Top Down/Bottom Up		8½"	9½"	10½"	11½"	12½"	13"	14"	15"

**NOTE:** Stacking dimensions are approximate and could vary  $\pm 1"$

## Finish Index

Price Group A	COLOR #			WOOD VALANCE FINISH	LINER COLOR
<b>Loggia Collection</b>	NO LINER	LIGHT FILTERING	ROOM DARKENING		
Cocoa	50281916	51281916	52281916	Noble Chestnut	Brown
Dune	50281915	51281915	52281915	Natural Grain	Camel

Price Group B	COLOR #			WOOD VALANCE FINISH	LINER COLOR
<b>Bambu Palos Collection</b>	NO LINER	LIGHT FILTERING	ROOM DARKENING		
Cocoa	50281912	51281912	52281912	Noble Chestnut	Brown
Dune	50281911	51281911	52281911	Colonial Oak	Camel
<b>Gull Harbor Collection</b>					
Coffee	502NW007	512NW007	522NW007	Noble Chestnut	Brown
Moss	502NW006	512NW006	522NW006	Gray	Charcoal
Parchment	502NW005	512NW005	522NW005	Natural Grain	Camel

Price Group C	COLOR #			WOOD VALANCE FINISH	LINER COLOR
<b>Caribbean Blend Collection</b>	NO LINER	LIGHT FILTERING	ROOM DARKENING		
Cinnabar	50281959	51281959	52281959	Colonial Oak	Camel
Java	50281961	51281961	52281961	Colonial Oak	Camel
Sumatra	50281960	51281960	52281960	Noble Chestnut	Brown
<b>Heirloom Stripes Collection</b>					
Moss	50281920	51281920	52281920	Gray	Camel
Olive	50281759	51281759	52281759	Natural Grain	Camel
Umber	50281708	51281708	52281708	Basic Black	Charcoal

# Natural Shades

## Finish Index

Price Group D	COLOR #			WOOD VALANCE FINISH	LINER COLOR
<b>Metropolitan Collection</b>	NO LINER	LIGHT FILTERING	ROOM DARKENING		
Camel	50281925	51281925	52281925	Natural Grain	Camel
Midnight	50281923	51281923	52281923	Basic Black	Charcoal
Roast	50281924	51281924	52281924	Noble Chestnut	Brown
<b>Serape Collection</b>					
Dune	50282913	51282913	52282913	Noble Chestnut	Brown
<b>Sunset Key Collection</b>					
Dune	50281918	51281918	52281918	Natural Grain	Camel

Price Group E	COLOR #			WOOD VALANCE FINISH	LINER COLOR
<b>Palisades Collection</b>	NO LINER	LIGHT FILTERING	ROOM DARKENING		
Driftwood	502NW001	512NW001	522NW001	Colonial Oak	Camel
Dune	502NW002	512NW002	522NW002	Natural Grain	Camel
Steel	50281917	51281917	52281917	Gray	Camel
<b>Tranquil Cove Collection</b>					
Coffee	50281913	51281913	52281913	Noble Chestnut	Brown
Steel	50281914	51281914	52281914	Gray	Camel
White	502NW004	512NW004	522NW004	Natural Grain	Camel
<b>Woven Sisal Collection</b>					
Mulberry	50281927	51281927	52281927	Noble Chestnut	Brown
Rice Straw	50281928	51281928	52281928	Natural Grain	Camel
Rye Grass	50281926	51281926	52281926	Colonial Oak	Camel

Price Group F	COLOR #			WOOD VALANCE FINISH	LINER COLOR
<b>Seaside Collection</b>	NO LINER	LIGHT FILTERING	ROOM DARKENING		
Biscuit	50281922	51281922	52281922	Natural Grain	Camel

The listed Liner Colors are recommendations for color coordination. Customers may choose from any of the four available colors in Light Filtering or Room Darkening, but if a color is not specified the system will default to the color listed above. All liners are neutral to the street, and the liner color will be facing to the fabric.

The listed Wood Valance Finishes are recommendations for color coordination. Customers may choose from any of the five available finishes, but if a finish is not specified the system will default to the color listed above.

LINER COLORS		
	LIGHT FILTERING	ROOM DARKENING
Brown	07003	07006
Camel	07002	07005
Charcoal	07004	07008
White	80001	80012

WOOD VALANCE FINISHES	
Basic Black	02884
Noble Chestnut	02777
Colonial Oak	02771
Gray	50004
Natural Grain	02798

TRIM COLORS	
Black	20023
Cedar	20050
Gold	20051
Gray	20029
Vanilla	20017
White	20018

EDGE BINDING COLORS*			
Black	04106	Sand	04113
Chestnut	04103	Taupe	04114
Cocoa	04104	White	04111
Crimson	04115	Wilmington Sand	04116
Gray	50004	Wilmington Taupe	04117
Moss	04112		

\*Customer must specify 1" or 2" Edge Binding when ordering.

**NOTE:** It is recommended to use 1" Edge Binding for window widths less than 36" and 2" Edge Binding for window widths greater than 36."

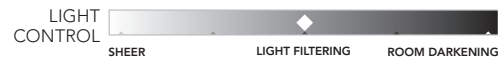


# Natural Shades

---

## Light Control Index

Each collection is rated for light control. This convenient indicator can be found next to the available colors grid on each pricing page.



## Cleaning Guide

### Care Instructions

Periodically vacuum with a brush attachment to ensure lasting beauty. With proper care and maintenance, Natural Shades should last for years. Do not use water, solvents, or abrasive solutions to clean the shade.

### Color Variation

Kirsch Natural Shades are created using natural products. By nature, no two strands of grass, bamboo or reeds are exactly the same, making every shade truly unique. Slight color, grain and texture variations should be expected and cherished for their unique beauty.

### Stretching and Shrinking

Natural woven fabric will be affected by temperature and humidity. Shipping and handling may cause a slight change in shade lengths, and slight shrinkage, stretching and warping may occur over time.

**NOTE:** Material stretching may be more noticeable on inside mounts.



## Natural Shades

### Price Group A Loggia Collection

PRICE GROUP A															
HEIGHT TO	WIDTH TO	16"	24"	31"	36"	42"	48"	60"	72"	84"	96"	108"	120"	132"	144"
	36"	188	239	279	334	362	389	444	579	641	693	748	803	858	913
42"	216	253	298	362	394	426	485	641	696	760	825	893	954	1019	
48"	239	281	320	389	426	460	535	693	760	835	906	984	1059	1129	
54"	259	304	334	417	457	499	579	740	825	906	984	1064	1142	1220	
60"	268	320	359	444	485	535	622	803	893	973	1055	1135	1220	1300	
66"	281	334	379	476	517	570	662	851	952	1048	1142	1240	1332	1430	
72"	301	354	401	499	550	602	712	906	1016	1119	1223	1330	1436	1540	
78"	311	366	417	524	579	641	753	961	1081	1194	1310	1423	1540	1654	
84"	320	385	437	550	612	676	803	1016	1139	1265	1395	1520	1649	1772	
90"	346	401	457	579	644	712	848	1064	1204	1332	1465	1595	1727	1857	
96"	354	414	479	602	676	751	893	1119	1265	1407	1551	1689	1827	1973	
102"	375	434	499	634	708	786	941	1174	1330	1478	1627	1776	1925	2074	
108"	385	452	521	662	740	818	989	1229	1387	1553	1712	1873	2032	2193	
114"	405	469	544	696	771	858	1042	1288	1456	1623	1792	1960	2129	2296	
120"	421	485	563	725	803	893	1087	1340	1517	1694	1873	2051	2229	2407	
SINGLE SHADE											2 SHADES ON ONE HEADRAIL				
SURCHARGE OPTIONS															
Light Filtering Privacy Liner	98	98	98	103	103	107	109	109	115	115	119	119	122	125	
Room Darkening Privacy Liner	127	127	127	131	131	136	140	142	146	149	152	158	164	167	
Cordless	146						206				297				
Continuous Cordloop	115										Multiply surcharge by the number of panels				
Top Down/ Bottom Up*	110								N/A						

Cordless single shade available (includes Standard and Top Down/Bottom Up)

**Cordless - Available in shaded box**

**Continuous Cord Loop - Available in shaded area**

**2 on 1 headrail - Required in shaded area**

NOTE: See page 5 for Minimum/Maximum Width/Height information

N/A = not available

FREE OPTIONS	
Must be requested at time of order.	
No Valance	
Wood Valance	
Classic Valance	
Pull Cord (left or right)	
Custom Cord Length	
(standard corded or continuous cordloop)	
Hold-Down Brackets (outside mount only)	
Projection Brackets	
Cord Cleats	

ADDITIONAL SURCHARGE OPTIONS	
2 on 1 Headrail	\$74
Cutout (Center and Side Cutouts; maximum 2 cuts per shade)	\$78 Per Cut
Top Down/Bottom Up	\$110
Mitered Shades	\$49
Edge Binding (1" or 2")	\$213

AVAILABLE COLORS			
	NO LINER	LIGHT FILTERING	ROOM DARKENING
Cocoa	50281916	51281916	52281916
Dune	50281915	51281915	52281915

## Natural Shades

### Price Group B

### Bambu Palos and Gull Harbor Collections

PRICE GROUP B															
WIDTH TO HEIGHT TO		16"	24"	31"	36"	42"	48"	60"	72"	84"	96"	108"	120"	132"	144"
36"	244	316	366	439	473	506	580	759	836	908	981	1049	1121	1194	
42"	282	332	389	473	515	561	638	836	911	995	1084	1167	1248	1334	
48"	316	366	416	506	561	603	698	908	995	1095	1190	1285	1385	1480	
54"	339	396	439	549	595	652	759	972	1084	1190	1290	1392	1496	1595	
60"	350	416	469	580	638	698	813	1049	1167	1274	1380	1488	1595	1701	
66"	366	439	496	622	679	748	870	1114	1244	1374	1496	1621	1747	1873	
72"	393	462	523	652	717	790	931	1190	1331	1465	1607	1743	1880	2018	
78"	405	477	549	686	759	836	988	1259	1414	1564	1713	1866	2018	2167	
84"	416	503	572	717	802	885	1049	1331	1491	1659	1827	1992	2159	2323	
90"	454	523	595	759	842	931	1110	1392	1576	1747	1918	2090	2262	2435	
96"	462	541	629	790	885	984	1167	1465	1659	1846	2029	2213	2395	2586	
102"	496	569	652	831	927	1030	1232	1537	1739	1934	2133	2326	2521	2720	
108"	503	592	683	870	969	1072	1297	1613	1820	2033	2242	2452	2662	2877	
114"	529	615	709	911	1007	1121	1366	1687	1906	2125	2346	2567	2788	3010	
120"	549	638	739	950	1049	1167	1427	1754	1987	2219	2452	2685	2918	3151	
SINGLE SHADE											2 SHADES ON ONE HEADRAIL				
SURCHARGE OPTIONS															
Light Filtering Privacy Liner	98	98	98	103	103	107	109	109	115	115	119	119	122	125	
Room Darkening Privacy Liner	127	127	127	131	131	136	140	142	146	149	152	158	164	167	
Cordless	146						206				297				
Continuous Cordloop	115										Multiply surcharge by the number of panels				
Top Down/Bottom Up*	110								N/A						

Cordless single shade available (includes Standard and Top Down/Bottom Up)

Cordless - Available in shaded box

Continuous Cord Loop - Available in shaded area

2 on 1 headrail - Required in shaded area

NOTE: See page 5 for Minimum/Maximum Width/Height information

N/A = not available

FREE OPTIONS Must be requested at time of order.	
No Valance	
Wood Valance	
Classic Valance	
Pull Cord (left or right)	
Custom Cord Length (standard corded or continuous cordloop)	
Hold-Down Brackets (outside mount only)	
Projection Brackets	
Cord Cleats	

ADDITIONAL SURCHARGE OPTIONS	
2 on 1 Headrail	\$74
Cutout (Center and Side Cutouts; maximum 2 cuts per shade)	\$78 Per Cut
Top Down/Bottom Up	\$110
Mitered Shades	\$49
Edge Binding (1" or 2")	\$213

AVAILABLE COLORS—BAMBU PALOS COLLECTION			
	NO LINER	LIGHT FILTERING	ROOM DARKENING
Cocoa	50281912	51281912	52281912
Dune	50281911	51281911	52281911
AVAILABLE COLORS—GULL HARBOR COLLECTION			
	NO LINER	LIGHT FILTERING	ROOM DARKENING
Coffee	502NW007	512NW007	522NW007
Moss	502NW006	512NW006	522NW006
Parchment	502NW005	512NW005	522NW005

## Natural Shades

### Price Group C

### Caribbean Blend and Heirloom Stripes Collections

PRICE GROUP C															
WIDTH TO HEIGHT TO		16"	24"	31"	36"	42"	48"	60"	72"	84"	96"	108"	120"	132"	144"
36"		219	328	421	504	546	597	688	887	986	1083	1176	1273	1366	1462
42"		241	376	463	546	604	656	769	986	1096	1208	1314	1424	1530	1642
48"		286	412	497	597	656	724	841	1083	1208	1327	1450	1570	1693	1815
54"		328	457	534	644	713	787	926	1173	1318	1456	1597	1733	1873	2011
60"		357	479	546	659	769	841	1054	1333	1427	1578	1733	1890	2044	2198
66"		383	512	556	678	826	904	1118	1410	1533	1710	1880	2059	2237	2407
72"		399	534	575	787	881	968	1161	1456	1642	1828	2018	2205	2391	2580
78"		412	560	678	832	932	1034	1230	1553	1754	1957	2157	2359	2562	2760
84"		444	594	724	881	986	1096	1318	1642	1864	2089	2307	2531	2754	2975
90"		476	620	758	926	1034	1161	1388	1733	1973	2207	2442	2674	2908	3143
96"		489	646	794	968	1096	1221	1475	1828	2089	2334	2580	2828	3072	3320
102"		514	675	829	1016	1161	1285	1555	1925	2198	2451	2709	2966	3223	3480
108"		537	701	868	1061	1221	1350	1633	2022	2307	2574	2843	3108	3378	3644
114"		556	726	904	1106	1282	1413	1713	2117	2423	2699	2975	3248	3525	3801
120"		584	756	944	1150	1343	1475	1797	2211	2536	2818	3103	3390	3676	3959
SINGLE SHADE												2 SHADES ON ONE HEADRAIL			
SURCHARGE OPTIONS															
Light Filtering Privacy Liner	98	98	98	103	103	107	109	109	115	115		119	119	122	125
Room Darkening Privacy Liner	127	127	127	131	131	136	140	142	146	149		152	158	164	167
Cordless	146						206				297				
Continuous Cordloop	115										Multiply surcharge by the number of panels				
Top Down/Bottom Up*	110								N/A						

Cordless single shade available (includes Standard and Top Down/Bottom Up)

Cordless - Available in shaded box

Continuous Cord Loop - Available in shaded area

2 on 1 headrail - Required in shaded area

NOTE: See page 5 for Minimum/Maximum Width/Height information

N/A = not available

FREE OPTIONS	
Must be requested at time of order.	
No Valance	
Wood Valance	
Classic Valance	
Pull Cord (left or right)	
Custom Cord Length	
(standard corded or continuous cordloop)	
Hold-Down Brackets (outside mount only)	
Projection Brackets	
Cord Cleats	

#### AVAILABLE COLORS—CARIBBEAN BLEND COLLECTION

	NO LINER	LIGHT FILTERING	ROOM DARKENING
Cinnabar	50281959	51281959	52281959
Java	50281961	51281961	52281961
Sumatra	50281960	51281960	52281960

#### AVAILABLE COLORS—HEIRLOOM STRIPES COLLECTION

	NO LINER	LIGHT FILTERING	ROOM DARKENING
Moss	50281920	51281920	52281920
Olive	50281759	51281759	52281759
Umber	50281708	51281708	52281708

ADDITIONAL SURCHARGE OPTIONS	
2 on 1 Headrail	\$74
Cutout (Center and Side Cutouts; maximum 2 cuts per shade)	\$78 Per Cut
Top Down/Bottom Up	\$110
Mitered Shades	\$49
Edge Binding (1" or 2")	\$213

# Natural Shades

## Price Group D

### Metropolitan, Sunset Key and Serape Collections

PRICE GROUP D														
WIDTH TO 16"		24"	31"	36"	42"	48"	60"	72"	84"	96"	108"	120"	132"	144"
HEIGHT TO 36"	262	402	491	572	634	695	805	1033	1145	1265	1374	1492	1606	1721
42"	314	426	528	634	698	768	896	1145	1275	1414	1555	1698	1837	1977
48"	358	467	572	695	768	838	992	1265	1414	1565	1711	1861	2011	2158
54"	392	518	620	743	828	920	1087	1374	1544	1718	1895	2070	2239	2417
60"	420	549	665	805	896	992	1184	1492	1678	1861	2049	2233	2417	2604
66"	437	582	705	862	964	1067	1275	1598	1811	2014	2222	2427	2635	2835
72"	452	620	753	920	1030	1142	1374	1718	1940	2172	2400	2635	2863	3095
78"	488	658	795	971	1094	1220	1465	1824	2073	2315	2560	2809	3058	3300
84"	522	690	838	1030	1160	1293	1558	1940	2205	2464	2723	2986	3242	3501
90"	536	726	886	1087	1220	1374	1654	2049	2341	2621	2908	3188	3473	3752
96"	563	757	931	1142	1293	1442	1752	2172	2464	2767	3068	3368	3668	3969
102"	590	787	978	1199	1360	1517	1847	2287	2597	2921	3245	3572	3896	4217
108"	606	821	1026	1251	1425	1595	1936	2407	2730	3075	3420	3760	4104	4445
114"	641	852	1073	1306	1497	1667	2032	2526	2863	3228	3592	3958	4322	4690
120"	682	886	1115	1356	1565	1748	2127	2645	2996	3381	3770	4159	4544	4936
SINGLE SHADE											2 SHADES ON ONE HEADRAIL			
SURCHARGE OPTIONS														
Light Filtering Privacy Liner	98	98	98	103	103	107	109	109	115	115	119	119	122	125
Room Darkening Privacy Liner	127	127	127	131	131	136	140	142	146	149	152	158	164	167
Cordless	146						206				297			
Continuous Cordloop	115										Multiply surcharge by the number of panels			
Top Down/Bottom Up*	110							N/A						

Cordless single shade available (includes Standard and Top Down/Bottom Up)

**Cordless - Available in shaded box**

**Continuous Cord Loop - Available in shaded area**

**2 on 1 headrail - Required in shaded area**

NOTE: See page 5 for Minimum/Maximum Width/Height information

N/A = not available

FREE OPTIONS	
Must be requested at time of order.	
No Valance	
Wood Valance	
Classic Valance	
Pull Cord (left or right)	
Custom Cord Length	
(standard corded or continuous cordloop)	
Hold-Down Brackets (outside mount only)	
Projection Brackets	
Cord Cleats	

ADDITIONAL SURCHARGE OPTIONS	
2 on 1 Headrail	\$74
Cutout (Center and Side Cutouts; maximum 2 cuts per shade)	\$78 Per Cut
Top Down/Bottom Up	\$110
Mitered Shades	\$49
Edge Binding (1" or 2")	\$213

AVAILABLE COLORS—METROPOLITAN COLLECTION			
	NO LINER	LIGHT FILTERING	ROOM DARKENING
Camel	50281925	51281925	52281925
Midnight	50281923	51281923	52281923
Roast	50281924	51281924	52281924

AVAILABLE COLORS—SERAPE COLLECTION			
	NO LINER	LIGHT FILTERING	ROOM DARKENING
Dune	50282913	51282913	52282913

AVAILABLE COLORS—SUNSET KEY COLLECTION			
	NO LINER	LIGHT FILTERING	ROOM DARKENING
Dune	50281918	51281918	52281918

# Natural Shades

## Price Group E

### Palisades, Woven Sisal and Tranquil Cove Collections

PRICE GROUP E															
WIDTH TO		16"	24"	31"	36"	42"	48"	60"	72"	84"	96"	108"	120"	132"	144"
HEIGHT TO	36"	292	404	526	625	696	753	890	1138	1263	1392	1514	1643	1769	1891
	42"	346	466	580	696	768	846	992	1263	1420	1568	1721	1870	2024	2173
	48"	396	505	625	753	846	930	1099	1392	1568	1745	1918	2099	2271	2445
	54"	435	567	675	822	919	1021	1216	1520	1721	1915	2105	2295	2488	2682
	60"	466	604	727	890	992	1099	1321	1654	1873	2088	2302	2516	2730	2940
	66"	485	646	777	947	1073	1188	1432	1789	2024	2261	2498	2736	2974	3215
	72"	502	679	828	1021	1148	1276	1537	1915	2177	2435	2693	2950	3208	3463
	78"	540	720	883	1084	1216	1368	1646	2039	2332	2610	2896	3174	3459	3738
	84"	577	760	930	1148	1297	1446	1756	2177	2478	2777	3083	3388	3690	3996
	90"	594	802	985	1216	1368	1537	1867	2302	2631	2957	3282	3612	3938	4264
	96"	622	835	1036	1276	1446	1619	1969	2435	2777	3127	3477	3826	4172	4522
	102"	651	880	1084	1345	1520	1708	2078	2559	2930	3297	3667	4036	4403	4769
	108"	672	919	1130	1412	1600	1796	2186	2682	3089	3473	3854	4240	4624	5011
	114"	709	964	1177	1484	1678	1877	2292	2808	3235	3643	4047	4451	4855	5255
	120"	753	1000	1229	1548	1756	1966	2400	2937	3388	3813	4230	4654	5076	5496
SINGLE SHADE												2 SHADES ON ONE HEADRAIL			
SURCHARGE OPTIONS															
Light Filtering Privacy Liner	98	98	98	103	103	107	109	109	115	115		119	119	122	125
Room Darkening Privacy Liner	127	127	127	131	131	136	140	142	146	149		152	158	164	167
Cordless	146						206				297				
Continuous Cordloop	115										Multiply surcharge by the number of panels				
Top Down/Bottom Up*	110								N/A						

Cordless single shade available (includes Standard and Top Down/Bottom Up)

**Cordless - Available in shaded box**

**Continuous Cord Loop - Available in shaded area**

**2 on 1 headrail - Required in shaded area**

**NOTE: See page 5 for Minimum/Maximum Width/Height information**

**N/A = not available**

FREE OPTIONS Must be requested at time of order.	
No Valance	
Wood Valance	
Classic Valance	
Pull Cord (left or right)	
Custom Cord Length (standard corded or continuous cordloop)	
Hold-Down Brackets (outside mount only)	
Projection Brackets	
Cord Cleats	
ADDITIONAL SURCHARGE OPTIONS	
2 on 1 Headrail	\$74
Cutout (Center and Side Cutouts; maximum 2 cuts per shade)	\$78 Per Cut
Top Down/Bottom Up	\$110
Mitered Shades	\$49
Edge Binding (1" or 2")	\$213

AVAILABLE COLORS— PALISADES COLLECTION			
	NO LINER	LIGHT FILTERING	ROOM DARKENING
Driftwood	502NW001	512NW001	522NW001
Dune	502NW002	512NW002	522NW002
Steel	50281917	51281917	52281917
AVAILABLE COLORS— TRANQUIL COVE COLLECTION			
	NO LINER	LIGHT FILTERING	ROOM DARKENING
Coffee	50281913	51281913	52281913
Steel	50281914	51281914	52281914
White	502NW004	512NW004	522NW004
AVAILABLE COLORS— WOVEN SISAL COLLECTION			
	NO LINER	LIGHT FILTERING	ROOM DARKENING
Mulberry	50281927	51281927	52281927
Rice Straw	50281928	51281928	52281928
Rye Grass	50281926	51281926	52281926

## Natural Shades

### Price Group F Seaside Collection

PRICE GROUP F															
WIDTH TO		16"	24"	31"	36"	42"	48"	60"	72"	84"	96"	108"	120"	132"	144"
HEIGHT TO															
36"	318	440	573	680	758	821	968	1239	1375	1515	1648	1789	1926	2059	
42"	378	506	632	758	835	920	1080	1375	1545	1708	1874	2037	2204	2366	
48"	433	551	680	821	920	1013	1198	1515	1708	1900	2088	2285	2473	2661	
54"	473	618	735	894	1002	1113	1324	1656	1874	2085	2292	2499	2709	2920	
60"	506	658	791	968	1080	1198	1438	1800	2040	2273	2506	2739	2972	3201	
66"	528	702	847	1032	1168	1294	1560	1948	2204	2462	2721	2980	3239	3501	
72"	547	739	902	1113	1249	1390	1674	2085	2369	2651	2932	3213	3493	3771	
78"	588	784	961	1179	1324	1489	1793	2221	2540	2842	3153	3457	3767	4071	
84"	628	828	1013	1249	1412	1575	1912	2369	2699	3024	3357	3689	4019	4351	
90"	647	873	1072	1324	1489	1674	2033	2506	2865	3220	3574	3933	4288	4644	
96"	676	909	1127	1390	1575	1764	2144	2651	3024	3405	3786	4166	4544	4924	
102"	709	958	1179	1464	1656	1860	2262	2787	3191	3589	3993	4395	4794	5194	
108"	732	1002	1231	1538	1741	1955	2381	2920	3364	3781	4195	4618	5035	5457	
114"	773	1049	1282	1615	1826	2045	2495	3058	3522	3967	4406	4846	5286	5722	
120"	821	1091	1338	1686	1912	2140	2614	3198	3689	4152	4606	5068	5527	5985	
SINGLE SHADE											2 SHADES ON ONE HEADRAIL				
SURCHARGE OPTIONS															
Light Filtering Privacy Liner	98	98	98	103	103	107	109	109	115	115	119	119	122	125	
Room Darkening Privacy Liner	127	127	127	131	131	136	140	142	146	149	152	158	164	167	
Cordless	146						206				297				
Continuous Cordloop	115										Multiply surcharge by the number of panels				
Top Down/Bottom Up*	110							N/A							

Cordless single shade available (includes Standard and Top Down/Bottom Up)

Cordless - Available in shaded box

Continuous Cord Loop - Available in shaded area

2 on 1 headrail - Required in shaded area

NOTE: See page 5 for Minimum/Maximum Width/Height information

N/A = not available

FREE OPTIONS	
Must be requested at time of order.	
No Valance	
Wood Valance	
Classic Valance	
Pull Cord (left or right)	
Custom Cord Length	
(standard corded or continuous cordloop)	
Hold-Down Brackets (outside mount only)	
Projection Brackets	
Cord Cleats	

ADDITIONAL SURCHARGE OPTIONS	
2 on 1 Headrail	\$74
Cutout (Center and Side Cutouts; maximum 2 cuts per shade)	\$78 Per Cut
Top Down/Bottom Up	\$110
Mitered Shades	\$49
Edge Binding (1" or 2")	\$213

AVAILABLE COLORS—SEASIDE COLLECTION			
	NO LINER	LIGHT FILTERING	ROOM DARKENING
Biscuit	50281922	51281922	52281922

## Natural Shades

### Pricing for Options

#### ADDITIONAL VALANCE HEIGHT \*\*

	Width To 16"	24"	31"	36"	42"	48"	60"	72"	84"	96"	108"	120"	132"	144"
Additional Valance Height	32	36	42	58	66	67	81	89	104	115	126	137	149	160

\*\* Standard Valance height is 6", maximum valance height is 30". Extra valance height is only available on Classic valance.

#### CATHEDRAL AND ANGLE TOP SURCHARGE \*\*\*

	Width To 36"	48"	60"	72"	84"	96"
Cathedral	262	286	323	366	391	440
Angle Top	134	155	172	185	193	213

\*\*\* Add surcharge to price of each shade. Available as classic valance shade only. All cathedrals (arches) require a template.

#### SEPARATE SHADE VALANCE PRICING

	Width To 16"	24"	31"	36"	42"	48"	60"	72"	84"	96"
Separate Shade Valance	94	104	115	134	157	176	211	262	289	332

#### SURCHARGE OPTIONS

2 on 1 Headrail (Classic and Wood Only)	\$74
Cutout (Center and Side Cutouts; Maximum 2 Cuts/Shade)	\$78 Per Cut
Top Down/Bottom Up	\$110
Mitered Shades (Classic only)	\$49
Tailored Edge 1" or 2"	\$213
Light-Filtering Privacy Liner	See pricing grids
Room-Darkening Privacy Liner	See pricing grids
Cordless	See pricing grids
Continuous Cordloop	See pricing grids

#### FREE OPTIONS

Must be requested at time of ordering

Wood Valance
Cord Cleats
Projection brackets (3")
Hold-down brackets (outside mount only)
Control side of shade



## Options

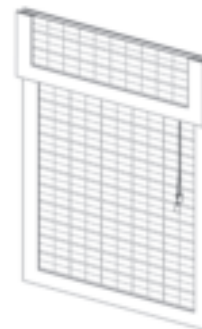
### DECORATIVE OPTIONS

#### Edge Binding

Edge Binding is a decorative fabric accent, available in both solids and patterns, that complements home decor and provides a truly finished look. It is recommended to use 1" edge binding for window widths less than 36" and 2" edge binding for window widths greater than 36."

##### NOTES:

- Only available if shade width is >16."
- Available with Classic, Wood or No Valance.
- For Cordless shades, Edge Binding will only be applied down the sides of the shade and Classic Valance (if selected).
- Not available on Angle Top, Cathedral or Scallops.
- No Bottom Bar or Hold-Down Brackets available.
- Not available on Separate Shade Valance.



### VALANCE OPTIONS



#### NO VALANCE

Provides a clean look. Fabric is one panel and begins at the top of the window. Available on single shades with Cordless control and Continuous Cordloop options.



#### WOOD VALANCE

Coordinates to the Kirsch Custom Wood collection. Available on single and multiple shades per headrail, on all Standard Corded, Cordless and Continuous Cordloop shades.



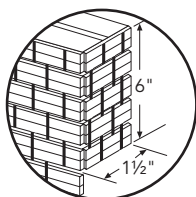
#### CLASSIC VALANCE

Offers a more traditional look. Available on single and multiple shades per headrail, on all Standard Corded, Corded Top Down/Bottom Up, Cordless and Continuous Cordloop shades.

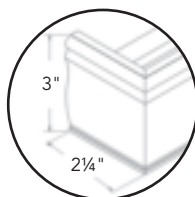
**NOTE:** Minimum/standard valance height is 6"; maximum height is 30."

## Options

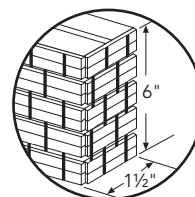
### VALANCE RETURN OPTIONS



No Valance



Wood Valance



Classic Valance

**NOTE:** 1 1/2" dimension can't be changed on the return.

\* The Classic Valance returns will match the length of the valance.

The Classic Valance defaults to 6" but can be ordered up to 30" long

### SEPARATE SHADE VALANCE

A separate shade valance can be used either alone or to complement cloth draperies, wood blinds, or any window treatment.

#### PRODUCT DIMENSIONS

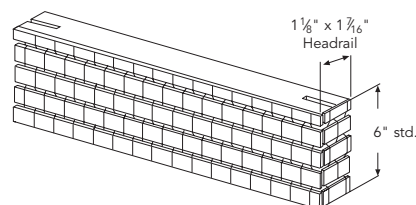
Minimum Width 6"

Minimum Height 6"

Maximum Width 96"

Maximum Height 30"

Standard Height 6"



**NOTE:** Factory will take 1/2" allowance on inside mount.

**NOTE:** Separate shade valance is not available with Edge Binding,

Scallops or Trim. Available as Classic Valance only.

### LIGHT CONTROL OPTIONS

Each liner is available in four colors; all are neutral to the street for a uniform appearance across the home. See pages 6–7 for a list of coordinating liner colors. If customer does not specify at time of order, shade will be made with listed liner color. Liners wider than 54" will be vertically seamed. Cords are visible on the back of the shade. Liners not available on Angle Tops, Cathedrals or Cutouts.



#### NO LINER

Allows the maximum amount of light to enter the room. Ideal for any room where light is desired to stream in freely.



#### LIGHT FILTERING LINER

Softly filters light and provides privacy. Ideal for any room where filtered light and soft illumination are desired, such as a living room or dining room.



#### ROOM DARKENING LINER

Offers the ultimate in light blocking and privacy, with added insulation. Ideal for rooms where optimal darkness is desired, such as a bedroom, nursery, or media room.

## Options

### LIFT OPTIONS

#### Continuous Cordloop

- Perfect for large windows
- Eliminates dangling cords
- Cords remain at the same position regardless of shade position

**NOTE:** See each price grid for single shade width restrictions.

#### Continuous Cordloop 2 on 1 Headrail Dimensions

	Width To 108"	120"	132"	144"
Maximum Height	96"	84"	78"	72"

#### Top Down/Bottom Up

- The shade can be lowered from the top and raised from the bottom
- Separate controls on each side of the shade control the rails independently
- The shade is measured in the same way as a standard shade
- Only available with Classic Valance or Wood Valance
- See each price grid for specific width and height limitations

**NOTE:** Right controls lift from bottom; left controls lower from top.

Control positions cannot be changed.

**NOTE:** Not available with 2 on 1 headrail.

**NOTE:** Not available with Continuous Cordloop or Cordless option.

#### Cordless

- Offers a clean, finished profile across all your windows without dangling cords
- See each price grid for specific width and height limitations

**NOTE:** All shades are shipped with a bottomrail handle for operation.

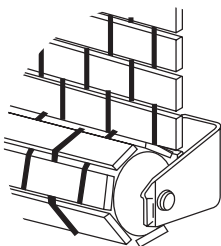
**NOTE:** Cordless shades need to be operated daily.

### SPECIAL BRACKETS

Must be requested at time of ordering.

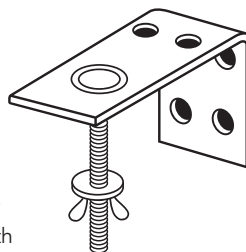
#### HOLD-DOWN BRACKETS

Hold-Down Brackets are available for securing the bottomrail in position. These brackets can stop a shade from bouncing and loosely swinging if the shade is hung on a door. Available only on outside mount. Not available with Projection Brackets.



#### PROJECTION BRACKETS

Projection Brackets are available for outside mount shades. When the shade must operate around an obstruction, these brackets project the shade away from the wall, allowing easy operation. Not available with Hold-Down Brackets.



#### CORD CLEAT

Use with corded product to anchor cords neatly to the wall.

## Specialty Options

### MITERED SHADES

#### MEASURING INSIDE MOUNT

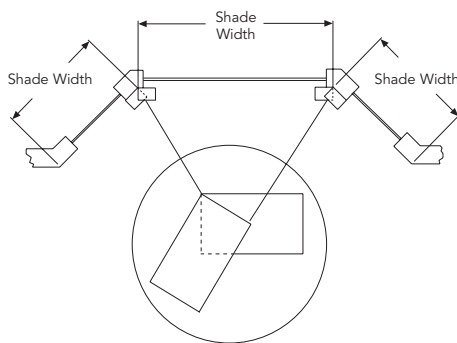
1. If the valance is to be flush with the front of the opening, measure the front width of the window opening and add 1 5/8" for the width of each shade. This will be the shade size. The factory will automatically take an allowance of 1/4" off each shade for clearance, unless you specify otherwise.
2. To measure height, use standard inside measuring procedures.

#### MEASURING OUTSIDE MOUNT/CEILING MOUNT

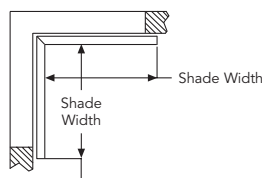
1. Shade widths are obtained by measuring from the corner to a point approximately 1 1/2" beyond window opening or frame.
2. To measure height, use standard outside measuring procedures.

#### NOTES:

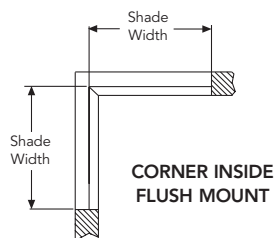
- Must choose Wood or Classic valance.
- Mitered shades cannot be raised to the same level.
- Horizontal pattern alignment between shades cannot be guaranteed.
- Pull cords can be on the right or left side of each shade. Locating cords opposite to the miter is recommended.
- Cannot have Cutouts, Cathedral or Angle Top.
- Not available with Top Down/Bottom Up.
- Cannot be side-by-side option.
- Template required.



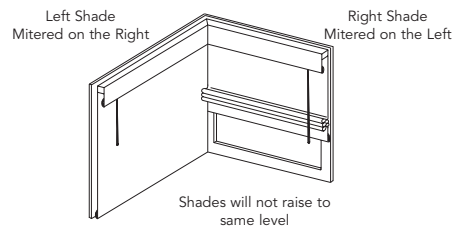
TEMPLATE FOR MITERED ANGLE



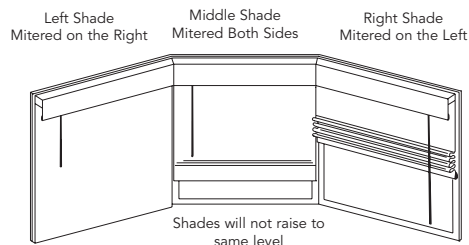
CORNER OUTSIDE OR  
CEILING MOUNT



CORNER INSIDE  
FLUSH MOUNT



MITERED SHADES ON CORNERED WINDOWS



MITERED SHADES ON BAY WINDOWS

### CUTOUTS

Allows access to air conditioners, window cranks, etc.  
Center and side cutouts are available. A diagram is required showing location and size of cutout on the shade.

**NOTE:** Not available with a liner, Cordless lift option, or 2 shades on 1 headrail.

## Specialty Options

### CATHEDRAL (ARCH) TOP

#### MEASURING INSIDE MOUNT

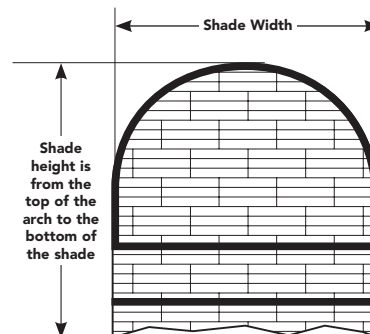
1. Measure width of window opening at three different places and use narrowest dimension for ordering. The factory will automatically take an allowance of 1/2" unless you specify otherwise.
2. For height, measure from the highest point on the arch to the top of sill. Factory does not take any allowances on height.
3. Template required.

#### MEASURING OUTSIDE MOUNT

1. Measure exact width and height of area to be covered. It is recommended that shades overlap the window frame or opening by 1 1/2" on each side for a total overlap of 3".
2. Template required.

#### NOTES:

- Product must have trim. Please select coordinating trim color.
- If width  $\geq 48$ ", maximum drop is 48".
- Available on Classic Valance shade only.
- Available on single shade only.
- Liner option not available.
- Standard Arch does not raise or lower.
- Not available with Top Down/Bottom Up option.
- Not available with Edge Binding.



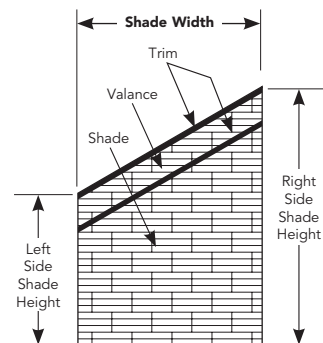
### ANGLE TOP

#### Measuring Inside Mount

1. Measure width of window opening at 3 different places and use narrowest dimension for ordering. The factory will automatically take an allowance of 1/2" unless you specify otherwise.
2. Measure height of opening on left side from top of opening to top of sill. Mark this dimension "left" on order form. Factory does not take any allowances on height.
3. Measure height of opening on right side from top of opening to top of sill. Mark this dimension "right" on order form. Factory does not take any allowances on height.
4. Factory will determine the angle from these dimensions.

#### Measuring Outside Mount

1. Measure exact width and height of area to be covered. It is recommended that shades overlap window frame or opening by 1 1/2" on each side.
2. Measure height of opening on left side and mark this dimension "left." Allow for overlap as desired: 1 1/2" on top and bottom is recommended.
3. Measure height of opening on right side and mark this dimension "right." Allow for the same overlap as left side.
4. Factory will determine the angle from these three dimensions.



ANGLE VALANCE SHADE

#### NOTES:

- Product must have trim. Please select coordinating trim color.
- Available on Classic Valance shade only.
- Cords will be on short or tall side of the shade. Must specify.
- Shade will raise only to the lowest point of the angle.
- Available on single shade only.
- Liner option not available.
- Not available with Top Down/Bottom Up option.
- Template required.

## Specialty Options

### How To Make a Template

#### STEP 1

Completely cover the window opening or area to be covered with clean craft or butcher paper and tape into place.

**DO NOT USE NEWSPAPER, PLASTIC, OR CARDBOARD.**

#### STEP 2

Mark the room side of the template "FACE."

#### STEP 3

Draw the outline of the window opening in with a pencil.

#### STEP 4

For inside mount shades, cut out the template along the penciled line.

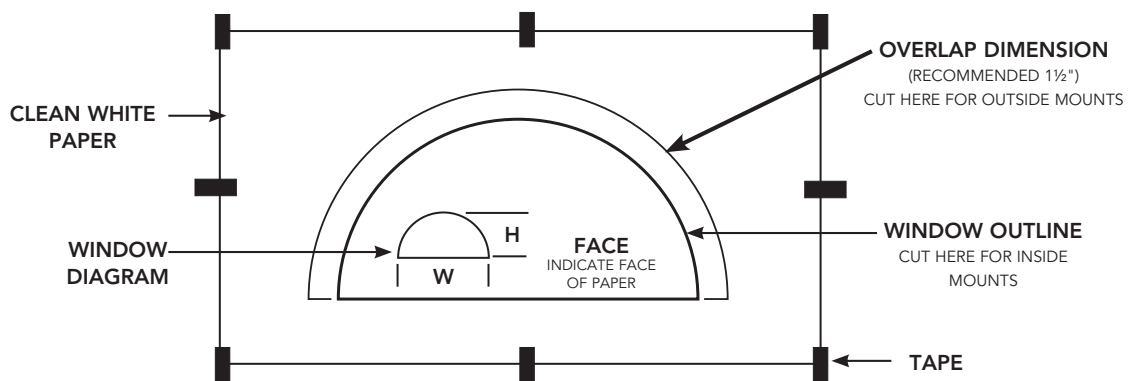
For outside mount shades, add the desired overlap to the penciled guideline and draw in a new guideline. Cut the template along this new guideline.

#### STEP 5

Draw a diagram of the window area on the face of the template, denoting maximum width and height.

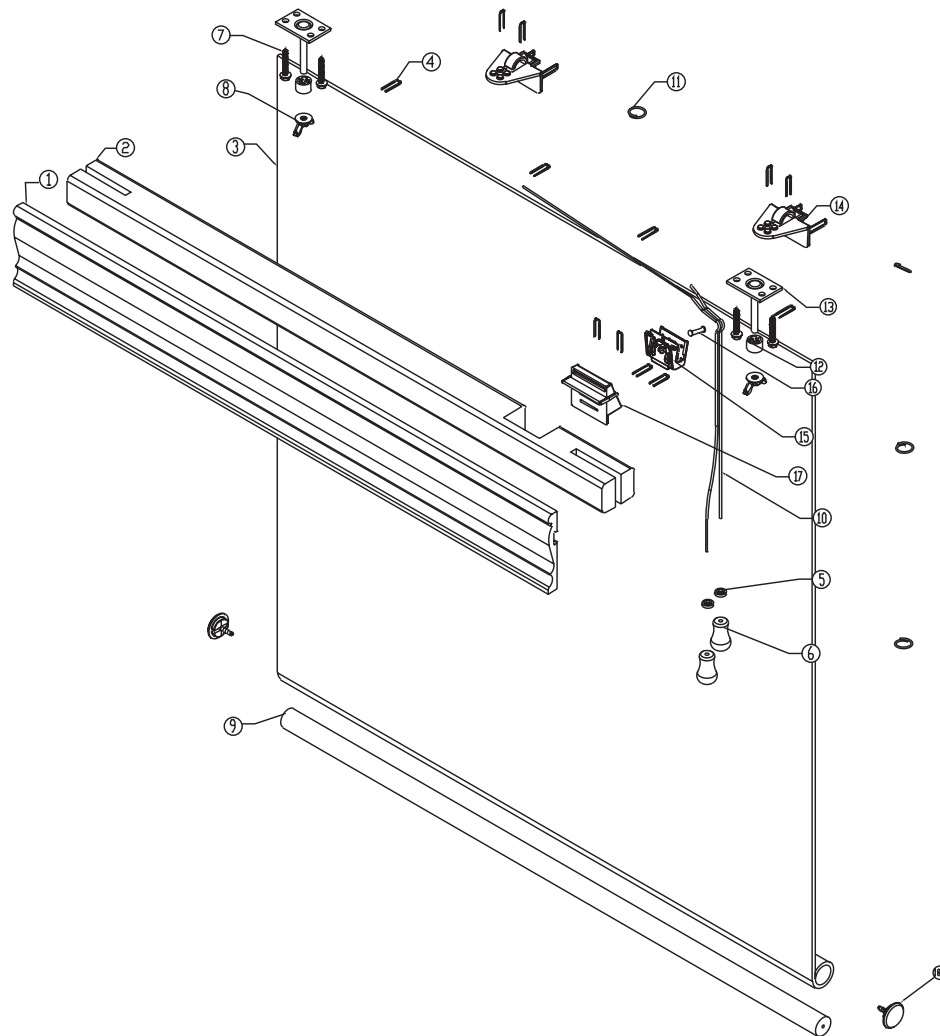
#### STEP 6

Send in the cut portion of the template. For best results, roll, do not fold, the template for shipment.



Contact Customer Service for mailing instructions.

## Exploded View—Standard Natural Shade

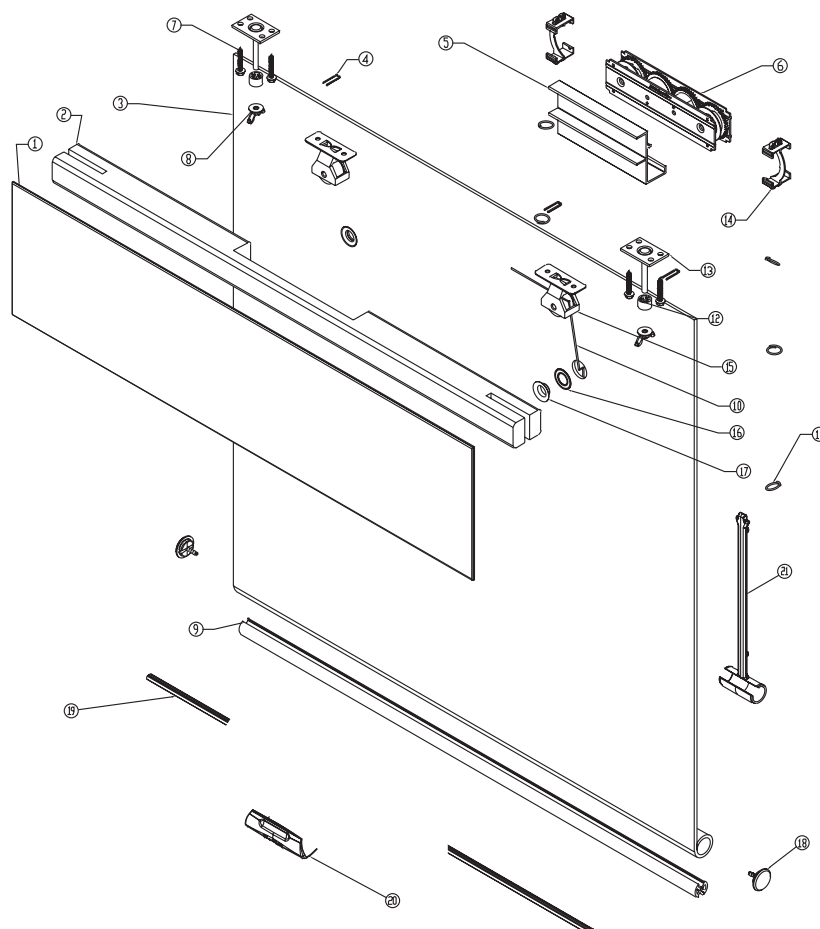


MSRP DESCRIPTION	SAP DESCRIPTION
1 WOOD VALANCE	*VALANCE*WD*L30W*
2 HEADRAIL	*DRL07001
3 FABRIC	VARIOUS
4 3/4" STAPLE	STAPLES;SX5035 0.075";-QV50
5 CLEAR SAFETY CORD STOP	WASHERS;SAFETY STOP;30445;-DDW3
6 WOOD TASSEL	TASSEL;WD*K07V
7 #6X1.25 SELF TAPPING SCREW	SCREW;WD;#6 X 1.25" HEX;01042;-DRL0
8 WING NUT	NUT;WING;#10-32;00018;-DRL0
9 BOTTOMRAIL DOWEL	DOWEL;0.625";-DRL0
10 CORD	VARIOUS
11 SPLIT RING	RINGS;SPLIT;WVWD;76070;-TK17
12 SPACER	BRKT;SPACER;INSTALL;07007;-DRL0
13 IB BRACKET	BRKT;WD;INSTALLATION;IB;00015;-DRL0
14 CORD GUIDE	VARIOUS
15 CORD LOCK	VARIOUS
16 CORD LOCK PAWL	VARIOUS
17 CORD LOCK CLIP	VARIOUS
18 ENDCAP	ENDCAP; KIRSCH*HGEC0110

**NOTE:** The classic valance is applied with glue and staples.  
The wood valance and the classic valance returns are applied with Velcro.

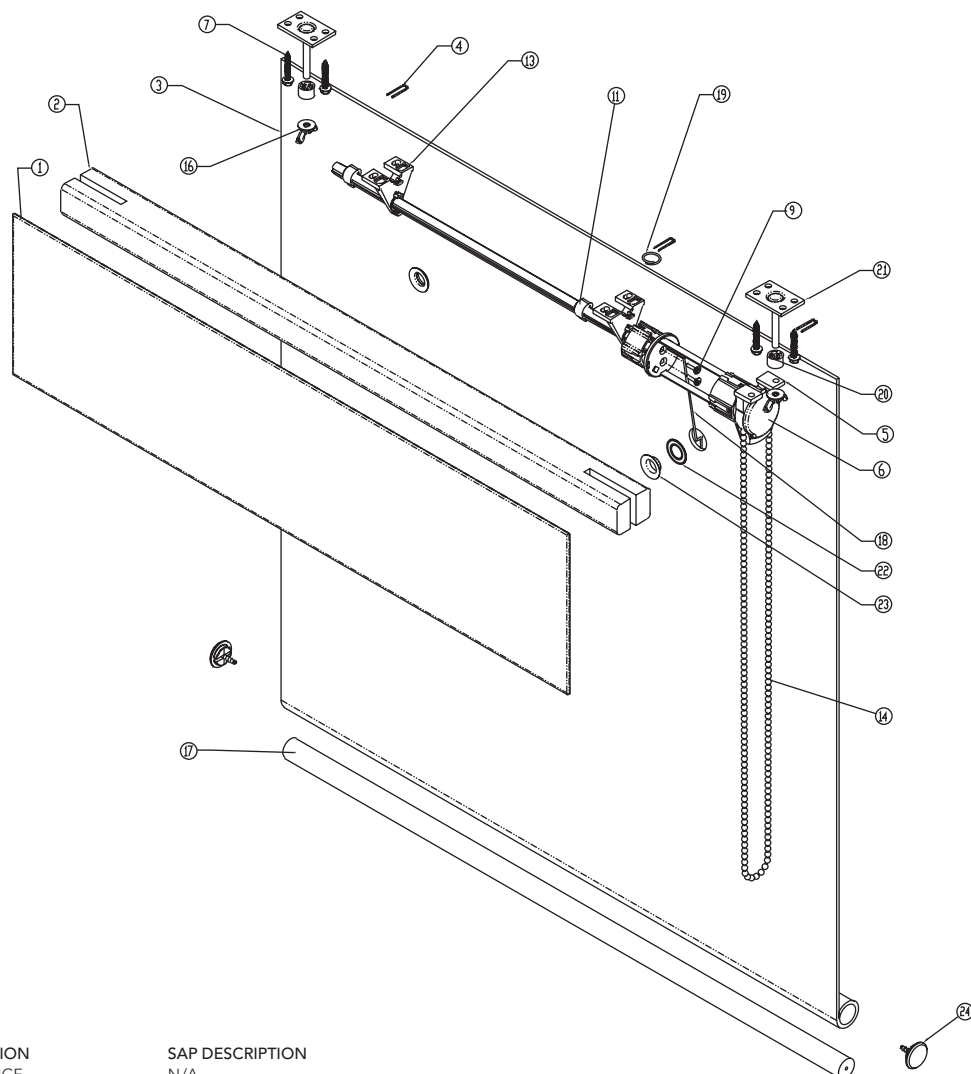


## Exploded View—Cordless Natural Shade



MSRP DESCRIPTION	SAP DESCRIPTION
1 CLASSIC VALANCE	N/A
2 HEADRAIL	*DRL07001
3 FABRIC	VARIOUS
4 3/4" STAPLE	STAPLES;SX5035 0.075";00390;-QV50
5 MOTOR CRADLE	CRADLE;CORDLESS MOTOR
6 MOTOR	VARIOUS
7 #6X1.25 SELF TAPPING SCREW	SCREW;WD;#6 X 1.25" HEX;01042;-DRL0
8 WING NUT	NUT;WING;#10-32;00018;-DRL0
9 BOTTOMRAIL DOWEL	DOWEL;BOTRAIL
10 CORD	CORD;DURACORD*C48
11 SPLIT RING	RINGS;SPLIT;WVWD;76070;-TK17
12 SPACER	BRKT;SPACER;INSTALL;07007;-DRL0
13 IB BRACKET	BRKT;WD;INSTALLATION;IB;00015;-DRL0
14 CORD SEPARATOR	CORD;SEPARATOR
15 CORD PULLEY	PULLEY;SWIVEL;00040;-DR50
16 BRASS GROMMET FEMALE	GROMMET;01076;-DRL0
17 BRASS GROMMET MALE	GROMMET;01077;-DRL0
18 ENDCAP	ENDCAP;KIRSCH*HGEC0110
19 BOTTOMRAIL WEIGHT	TILT ROD;"D";12";00010;-E20P
21 CORDLESS SUPPORT	STRUT;CORDLESS;HGSP0024

## Exploded View—Continuous Cordloop Natural Shade




MSRP DESCRIPTION	SAP DESCRIPTION
1 CLASSIC VALANCE	N/A
2 HEADRAIL	*DRL07001
3 FABRIC	VARIOUS
4 3/4" STAPLE	STAPLES;SX5035 0.075";00390;-QV50
5 SLIM CLUTCH ASSEMBLY	CLUTCH;SLIM
6 SLIM CLUTCH ASSEMBLY COVER	COVER;SLIM CLUTCH
7 #6X1.25 SELF TAPPING SCREW	SCREW;WD;#6 X 1.25" HEX;01042;-DRL0
9 SPEAR DISK SCREW	SCREW;CONT CORDLOOP SPEAR DISK
11 CORD CLIP	CORD CLIP;CONT CORDLOOP
13 SLIM SHAFT BRACKET	BRKT;SLIM SHAFT
14 CORDLOOP	*F20A*
16 WING NUT	NUT;WING;#10-32;00018;-DRL0
17 BOTTOMRAIL DOWEL	DOWEL;BOTRAIL
18 CORD	*CC08*
19 SPLIT RING	RINGS;SPLIT;WVWD;76070;-TK17
20 SPACER	BRKT;SPACER;INSTALL;07007;-DRL0
21 IB BRACKET	BRKT;WD;INSTALLATION;IB;00015;-DRL0
22 BRASS GROMMET FEMALE	GROMMET;01076;-DRL0
23 BRASS GROMMET MALE	GROMMET;01077;-DRL0
24 ENDCAP	ENDCAP; KIRSCH*HGEC0110

## Troubleshooting Tips

### Corded Natural Shades

PROBLEM	SOLUTIONS
Controls too long	Untie the upper knot from the safety washer. Push the safety washer up to the desired location and tie the knot again. Before cutting off excess cording, please lower the shade to ensure that the length of the shade and the controls are satisfactory.
Cordlock inoperable	Contact place of purchase for an authorized repair.
Shade not lowering	Unlock cordlock by pulling lift cord to the inside of the shade and pull down on the bottom bar.

### Cordless Natural Shades

PROBLEM	SOLUTIONS
Creeping or sagging  Friction Clip #HMSP0010	If you notice your shade is creeping up from the bottom or sagging from the top, contact Customer Service to receive friction clips and instructions to install into the spring motor.
Hangs unevenly	In some instances, the cords in your Cordless shade can become entangled. This problem can typically be solved by pulling the shade down completely. This will usually realign the cords. <b>Prevention Tip:</b> Always lift your shade from the middle rather than the sides, and do not lift too quickly, as this creates slack in the cords.
Does not operate smoothly	Look inside the headrail at the spring motor and check for friction clips. Remove one and/or all of the friction clips and check for improved operation.
Will not lift	Gently pull down on the bottomrail and then lift to reactivate the spring.

## Terms and Conditions

### Order Processing

#### Telephone Orders

Verbal orders are accepted as the dealer's responsibility. Each order will be repeated back by the Customer Service Representative. In certain instances, we may require written orders.

#### Duplicated Orders

All orders are confirmed after entry into our system. Customer Service is not responsible for duplicate orders caused by a written order following a telephone order or duplicate faxes.

#### Changes and Cancellations

All products are custom-made to your specifications under tight deadlines. Once production has begun on your order, changes and cancellations cannot be made.

#### Contract Orders

All Contract Orders must be processed through Contract Customer Service at 1-800-826-8021.

### Claims and Returns

#### Defective Merchandise

All manufacturing defects must be reported to Customer Service within 30 days of receipt of blinds. We may require the return of defective blinds prior to repair or replacement.

#### Incorrect Merchandise

If any part of your shipment was made incorrectly, please advise Customer Service within 30 days. A replacement will be made at no charge if the problem was due to Kirsch error. If the problem was due to dealer or customer error, the original order and replacement order will be full charge.

#### Returns for Repair

Prior to return for repair, contact Customer Service. We will request the order number, date, purchase order number, and type of product. Arrangements for return will be made at that time with directions as to how the blinds should be returned. The package should be marked for easy identification both inside and outside, and should contain a written confirmation of the verbal repair instructions. Repairs should be packaged carefully. Product that has been mishandled or received in poor condition will be returned to the customer.

Chargebacks for unauthorized repairs or additional installation cannot be honored. All returns for repair are subject to freight charges.

### Freight

- Shipments outside the continental U.S. are subject to freight charges.
- Chargeable parts and returns for repair are subject to freight charges.

### Pricing and Terms

All prices are subject to change without notice. Until credit is approved, terms are cash with order. Standard terms are Net 30 days from invoice date.

#### Returns for Credit

Returns can be accepted only if prior authorization has been obtained from Customer Service. Authorization will include instructions as to how the merchandise should be returned. Unauthorized returns will be refused.

#### Freight Damage FedEx/FedEx Ground:

- If freight damage is visible, refuse the shipment. FedEx will inspect the damage and return to the shipping location. Contact Customer Service for further information.
- If freight damage is concealed, retain all packaging materials and contact Customer Service immediately (must be notified within 14 days).

#### Freight Damage Common Carrier:

- If freight damage is visible, refuse the shipment. The carrier will return the merchandise to the shipping location for inspection. Contact Customer Service for further information.
- If freight damage is concealed, retain all packaging materials and contact Customer Service immediately (must be notified within 14 days).



# kirsch®



kirsch.com

Kirsch Window Fashions ©2016  
3 Glenlake Parkway, Atlanta, GA 30328  
1-800-225-1988 • 1-800-545-2325 fax • [www.kirsch.com](http://www.kirsch.com)

A ***NewellRubbermaid***™ Brand



1948487